

County of San Luis Obispo Onsite Environmental Coordinator
Guadalupe Update 3-9-2018

Construction/remediation activities continue at the Chevron Guadalupe Oil Field Remediation Site (Field) this week. The San Luis Obispo County Onsite Environmental Coordinator (OEC) continues to be present at the Field on a daily basis.

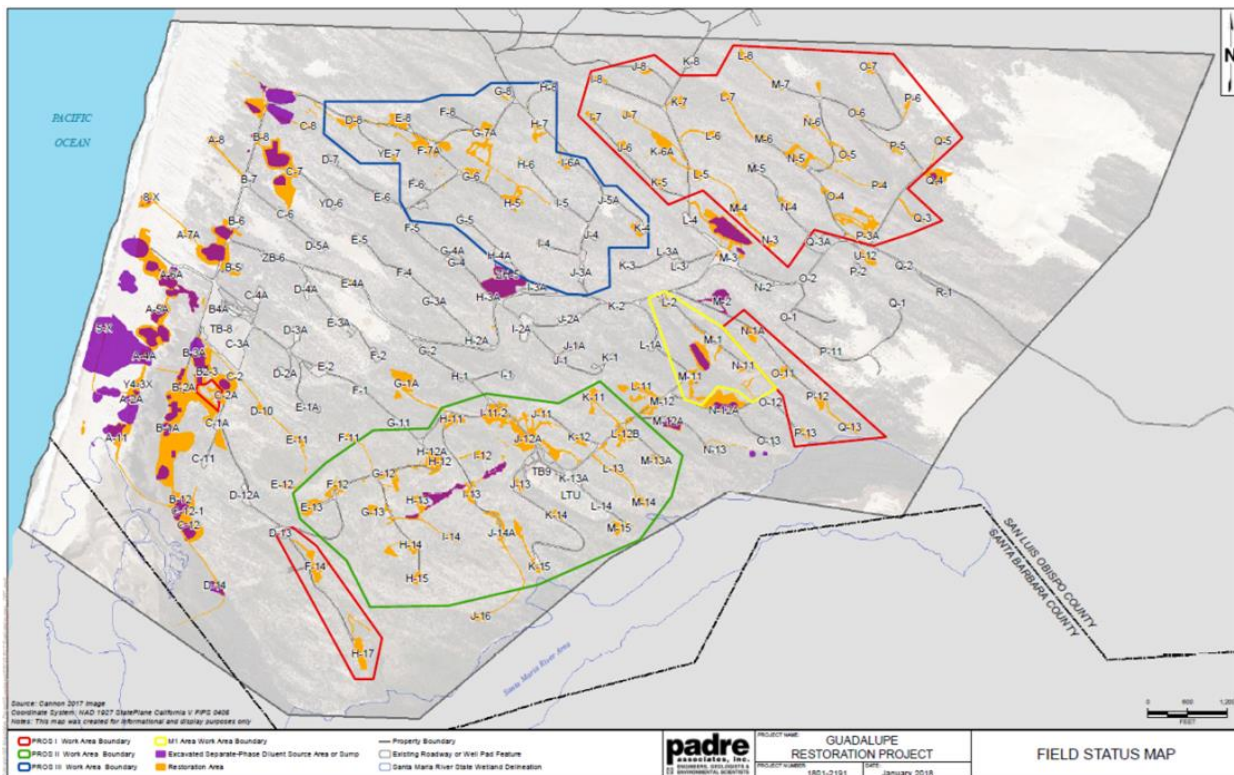
The following description of the activities at the Field will give any of the interested parties an opportunity to identify additional requests in terms of special monitoring or approval requirements for any particular tasks on the Field. Significant issues and important review schedules are underlined.

Construction contractor continues to work five 9-hour days per week. Entry into the site remain at 7 am. All construction related vehicles leave the site by 5 pm.

The following Plans are currently under agency review:

- Chevron has submitted a revised Water Monitoring Plan for agency review.
- Chevron has submitted the Phase IV PROS Work Plan for agency review and approval. Chevron has requested agency approval by March 16th.

To help orientate the placement of remediation activities, Figure 1 shows the Field and the location of all active and completed project sites (including the four PROS Work Plan Phases).



Phase I

- (Test Phase) Remediation Sites 2013-2015 PROS Sites (outlined in red)
- Phase II Remediation Sites 2015-2016 PROS Sites (outlined in green)
- Phase III Remediation Sites 2016-2017 PROS Sites (outlined in blue)
- M1 Work Area 2017 (outlined in yellow)
- Completed remediation sites: excavated separate phase diluent (purple)
- Completed PROS sites: excavated and/or treated (gold)

Here are the current activities:

Remediation Activities:

M1 Excavation

Chevron contractors have completed the excavation and backfill of the M1 Site. Entact has completed excavating, backfill, and regrading slopes surrounding the site.

- Entact has installed B&P measures including topsoil, jute-netting, sand fence, and hydroseed spray.
- A water sprinkler system was installed in the bottom of the M1 Valley to provide supplemental water for plantings.

Phase III PROS Pad, Road, and Oil Spray Removal/Treatment Activities

- The Chevron team continues excavation and treatment on several Phase III sites including the F6, G5, H4, H5 Sump, and I4 sites.
- The Excavation, backfill, final grade approval, and the installation of erosion and sediment control measures have been completed at the J11 Pad Site which is the final PROs Phase II site.
- Excavation, treatment, backfill, final grade approval, and the installation of erosion and sediment control measures have been completed at the following Phase III sites: D8, E8, F7A, F7B, F8, G6, G7, G8, H5, H7, H8, I5, I6A, J3A, J4, J5A, K4, L2, M1, M11, N11, and YE7.
- PROS activities include oil spray removal and treatment, pad treatment, sump removal, pipeline removal, road treatment, asbestos removal, and excavation of contaminated materials.



Excavating sump material at the G5 lower pad area.



Vegetation removal at the F1 Pad for future sump removal.



The I5 Site: during excavation activities. Diluent-contaminated soil and red rock was excavated from the pad site.



The I5 Site: post excavation activities: new red-rock was replaced and re-compacted to reconstruct red rock pad.

Hauling Activities

- RTS has ceased all hauling activities for the foreseeable future. All contaminated material is currently being hauled to the TB9 Stockpile site.
- Chevron continues to use the TB9 Stockpile site (also referred to as the Land Treatment Unit or LTU) to temporarily contain all material excavated from PROs Sites, as described in the recently approved TB9 Stockpile Work Plan.
- Chevron reports that as of December 2, 2016, a total of 68,820 loads have been hauled to the Santa Maria Landfill, totaling 1,562,142 tons or 1,107,902 c.y. of contaminated material.
- The original SEIR hauling activities were completed on 9/18/2012. At that time, a total of 51,962 SEIR related loads were hauled to the Santa Maria Landfill totaling 1,186,770.77 tons or 859,978.82 cy of contaminated materials.
- The SEIR Addendum hauling activities commenced on 9/24/2012. To date, a total of 16,858 Addendum related loads have been hauled to the Santa Maria Landfill, totaling 375,372 tons or 266,221 cy of contaminated materials.
- During hauling activities, the OEC receives and reviews weekly travel records for the 4-7 haul trucks driving between the Guadalupe Site and the SMLF. All records have demonstrated that trucks leaving the site were recorded being observed traveling along the established and approved travel route.

Perimeter Fence

- There were no cows observed on the Field in the last month. The fence line was inspected for any damages and/or breaks; any repairs were made as needed.

Other Field Activities:

- Padre staff continue to collect monitoring well samples throughout the Field according to their quarterly schedule.
- In accordance with CAO 98-38, amended November 6, 1998, active and passive free-product recovery systems continue to operate with periods of limited interruption at the Compressor Plant (CP), Diluent Tanks (DT), and Tank Battery 9 (TB9) Areas. As required, Padre staff provides notification to RWQCB staff during periods of planned shut-down for system maintenance and/or evaluation. System operation is dependent on recovery pump maintenance activities performed daily by O&M staff, which ensures the pumps are properly functioning.
- Chevron wildlife monitors conduct daily checks of the access roads prior to anyone entering the site.
- The hydrocarbon release at the 5X Beach Site continues to be monitored (visual and odor surveys 3x/week by Padre Staff) near the old 5X Excavation Site. There was no odor detected and there was no visible evidence of release. Chevron reports that beach surveys will continue one-to-three times per week as detailed in the 5X Beach Monitoring Plan.

Sensitive Species Issues:

- Western snowy plover monitors have begun beach surveys on March 1st. The beach is now closed for all project-related activities as required by the USFWS Biological Opinion and County Conditions.
- Feral pig depredation efforts continue onsite as directed and permitted under the CDFW depredation permit. USDA Wildlife Services continue to bait feral hog traps, as directed and allowed by the CDFW depredation permit and CEMC policies.
- Padre biologists conduct a daily morning clearance of all roads and work areas prior to all activities on the site.
- Chevron biologists continue to monitor restoration sites throughout the lease.



Turkey vulture sunning on beach.